

ZDelete - User Manual

Contents

| | |
|--|-----------|
| Legal Statement..... | 3 |
| End-User License Agreement..... | 4 |
| Installation & Initial Setup..... | 5 |
| Overview of ZDelete..... | 6 |
| Features..... | 6 |
| Applications..... | 6 |
| Components..... | 6 |
| ZDelete Bin..... | 8 |
| Drag & Drop Deletion..... | 8 |
| Context Menu Deletion..... | 10 |
| ZDelete Application..... | 11 |
| Registration & Licensing..... | 11 |
| Configuring ZDelete Settings..... | 12 |
| Updating the application..... | 12 |
| Appendix..... | 14 |
| Erase methods..... | 14 |

Legal Statement

Copyright © 2016, LSOFT TECHNOLOGIES INC. All rights reserved. No part of this documentation may be reproduced in any form or by any means or used to make any derivative work (such as translation, transformation, or adaptation) without written permission from LSOFT TECHNOLOGIES INC.

LSOFT TECHNOLOGIES INC. reserves the right to revise this documentation and to make changes in content from time to time without obligation on the part of LSOFT TECHNOLOGIES INC. to provide notification of such revision or change.

LSOFT TECHNOLOGIES INC. provides this documentation without warranty of any kind, either implied or expressed, including, but not limited to, the implied warranties of merchantability and fitness for a particular purpose. LSOFT may make improvements or changes in the product(s) and/or the program(s) described in this documentation at any time.

All technical data and computer software is commercial in nature and developed solely at private expense. As the User, or Installer/Administrator of this software, you agree not to remove or deface any portion of any legend provided on any licensed program or documentation contained in, or delivered to you in conjunction with, this User Guide.

Active@ ZDelete, the Active@ ZDelete logo and ZDelete are trademarks of LSOFT TECHNOLOGIES INC.

LSOFT.NET logo is a trademark of LSOFT TECHNOLOGIES INC.

Other brand and product names may be registered trademarks or trademarks of their respective holders.

End-User License Agreement

Active@ ZDelete

Copyright(c) 1998-2016 LSoft Technologies Inc.

All rights reserved.

END-USER LICENSE AGREEMENT IMPORTANT-READ CAREFULLY: This End-User License Agreement ("EULA") is a legal agreement between you (either an individual or a single entity) and The LSoft Technologies Inc. for the ZDelete later referred to as 'SOFTWARE'. By installing, copying, or otherwise using the SOFTWARE, you agree to be bound by the terms of this EULA. If you do not agree to the terms of this EULA, do not install or use the SOFTWARE.

WE REQUIRE ALL OUR DEALERS TO PROVIDE EACH PURCHASER WITH 30-DAYS EVALUATION COPY OF THE SOFTWARE TO GET A FULL UNDERSTANDING OF THE CAPABILITIES AND THE EASE OF USE OF THE SOFTWARE. OUR DEALERS HAD TO RECOMMEND YOU TO DOWNLOAD DEMO. WE WON'T ISSUE ANY REFUNDS AFTER PURCHASING FULL VERSION OF THE SOFTWARE.

LSoft Technologies Inc. may have patents, patent applications, trademarks, copyrights, or other intellectual property rights covering subject matter in this document. The furnishing of this document does not give you any license to these patents, trademarks, copyrights, or other intellectual property.

SOFTWARE LICENSE

Copyright laws and international copyright treaties, as well as other intellectual property laws and treaties protect the SOFTWARE. The SOFTWARE is licensed, not sold.

1. GRANT OF LICENSE. This EULA grants you the following rights: -You may install and use one copy of the SOFTWARE, or any prior version, on a single computer. -You may use full-featured version within 30 days free of charge on evaluation basis. -To use it after 30-day evaluation period you must pay registration fee for the license. -A license for the SOFTWARE may not be shared or used concurrently on different computers.

2. DESCRIPTION OF OTHER RIGHTS AND LIMITATIONS. -Limitations on Reverse Engineering, Recompilation, Disassembly, Modify, Translate SOFTWARE, Make any attempt to discover the source code of the SOFTWARE. -Rental. You may not rent, lease, or lend the SOFTWARE.

3. DISCLAIMER OF WARRANTY. THIS SOFTWARE AND THE ACCOMPANYING FILES ARE SOLD "AS IS" AND WITHOUT WARRANTIES AS TO PERFORMANCE OR MERCHANTABILITY OR ANY OTHER WARRANTIES WHETHER EXPRESSED OR IMPLIED. YOU USE THE SOFTWARE AT YOUR OWN RISK.

NO LIABILITY FOR CONSEQUENTIAL DAMAGES. To the maximum extent permitted by applicable law, in no event shall The LSoft Technologies Inc. or its suppliers be liable for any special, incidental, indirect, or consequential damages whatsoever (including, without limitation, damages for loss of business profits, business interruption, loss of business information, or any other pecuniary loss) arising out of the use of or inability to use this SOFTWARE, even if LSoft Technologies Inc. has been advised of the possibility of such damages. In any case, The LSoft Technologies Inc. entire liability under any provision of this EULA shall be limited EXCLUSIVELY TO PRODUCT REPLACEMENT.

LSoft Technologies Inc. reserves all rights not expressly granted here.

Installation & Initial Setup

1. Download **ZDelete-Setup.exe** from the your order confirmation email or from our website: zdelete.com
2. Run **ZDelete-Setup.exe** as an administrator
3. Follow Setup Wizard through the steps to successfully install the software

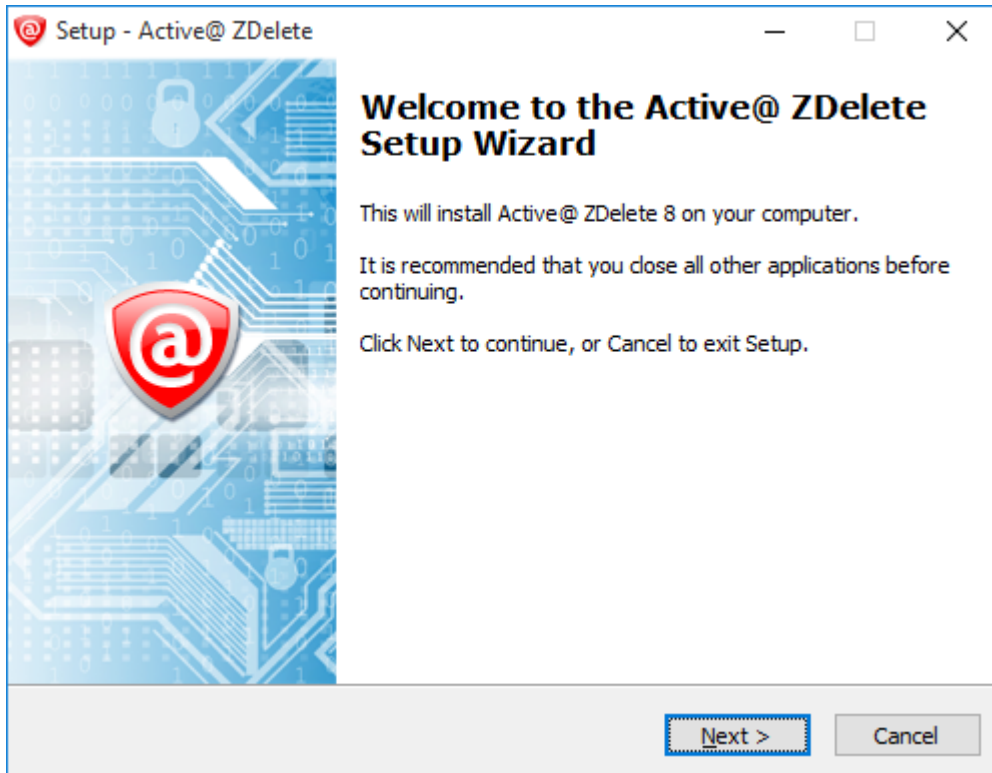


Figure 1: ZDelete Installer

Overview of ZDelete

ZDelete is designed to help protect your privacy by deleting files in such a way as to prevent other people from recovering your private data after deletion. ZDelete is a data cleanup and erase utility that can delete selected folders and groups of files without any possibility of data recovery afterward. Its' integrated **Disk Wipe** can clear out all free space on a hard disk so that recovery of deleted files becomes impossible.

ZDelete conforms to **US Department of Defense** clearing and sanitizing standard **DoD 5220.22-M**. You can be confident that once your confidential files are destroyed with this secure deletion utility, sensitive information is eliminated forever. It is a powerful and flexible data shredder for information that must be permanently directed away from the hard drive.

Features

Below is a list of main features of Active@ ZDelete:

- Graphical User Interface integrated with Windows Explorer and Microsoft Internet Explorer
- Windows Drag-and-Drop and Hotkey functionality.
- Functions reside in context command menus
- **ZDelete Bin** - familiar, comfortable & reliable erasure
- Custom configurations for a variety of applications

Applications

With today's sophisticated data recovery utilities, confidentiality of deleted files is questionable with the common **Windows Delete**, **Empty Recycle Bin**, **Clear History** and **Delete Temporary Internet Files** commands. An intruder using a low-level disk editor or one of many recovery tools will find deleted files are still recoverable. Even contents of deleted files, encrypted in Windows can be recovered.

The only way to make sure that deleted files are not recovered is to use specialized software that explicitly destroys the data, overwriting and replacing hard drive surface contents with random data, as recommended by the Department of Defense's DoD 5220.22-M / NISPOM 8-306. ZDelete is designed to be such a security tool and conforms to these established standards.

ZDelete can conveniently take the place of standard delete commands in Windows on any file system (FAT, FAT32, NTFS or NTFS5). ZDelete removes any possibility of unwanted file access or tracing of deleted data history and eliminates any chance of success for those using restored information against the owner's will.

Components

ZDelete Recycling Bin



Figure 2: ZDelete Bin

The ZDelete Desktop icon allows users to replace their Windows Recycling Bin with the ZDelete Bin - a Recycling Bin that **permanently** erases files and folders to internationally accepted disk sanitation standards. Erasure settings may be configured to a variety of widely accepted standards.

ZDelete Application

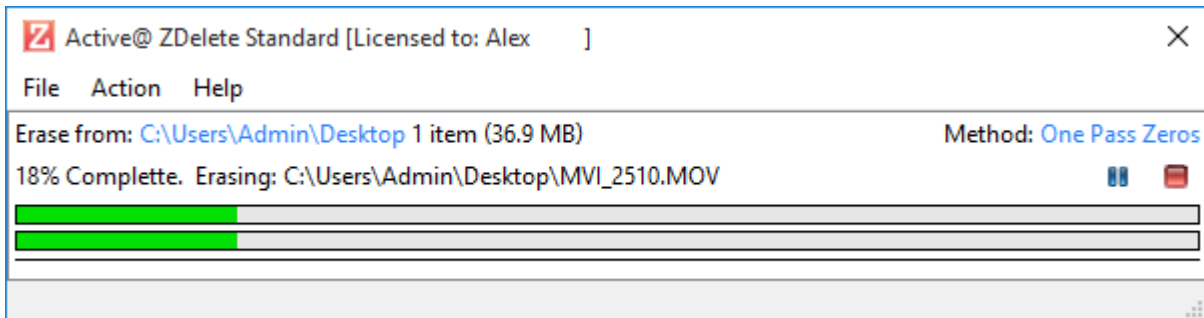


Figure 3: ZDelete Application Erasure process

The ZDelete application allows users to access all of ZDelete's features, configure the application settings, register/update the software, view the licensing information and read the software manual.

ZDelete Bin



Figure 4: Deleting a file with the ZDelete Bin

The ZDelete Bin is a convenient method of securely erasing files & folders to international security standards, all while maintaining the comfort of having a Recycling Bin to drag these files into. Once files are deleted using the ZDelete Bin, they are unrecoverable by any file recovery software or data recovery laboratory.

There are several ways to conveniently erase files with ZDelete - by dragging files into the ZDelete Bin, or by using the Windows context menu.

Drag & Drop Deletion

1. Select the file or folder to securely delete



Note: Make sure the file is not currently open or being used. This may prevent the erasure process from initiating.

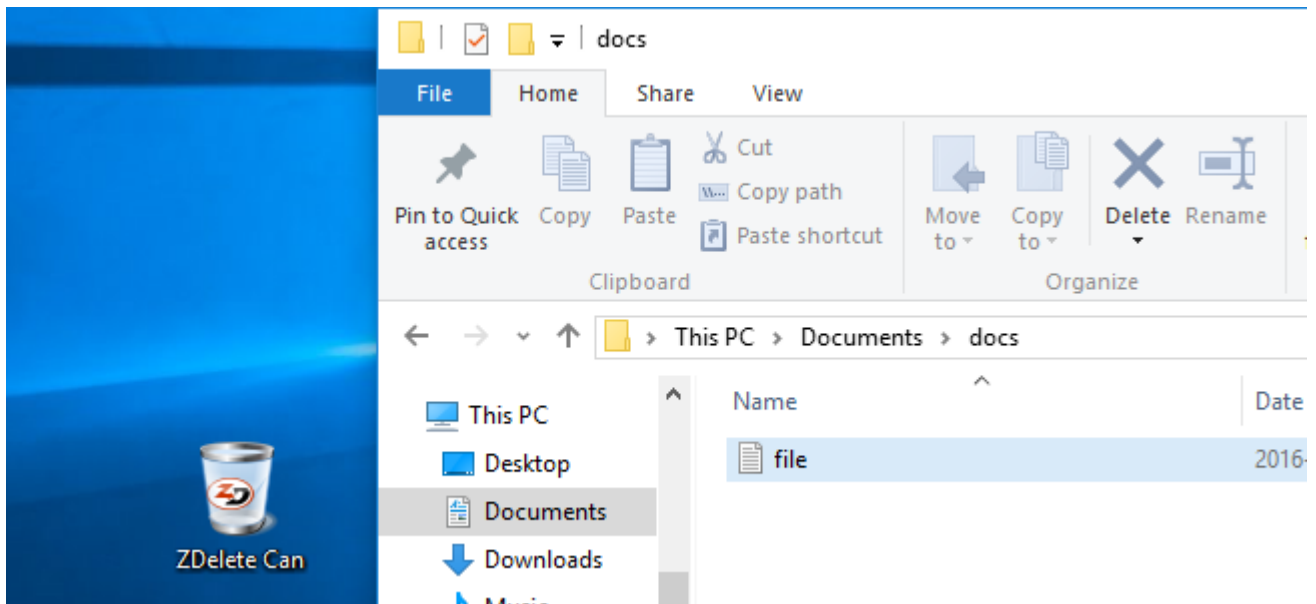


Figure 5: Selecting file for erasure

2. Drag the selected file/folder into the ZDelete desktop icon. The ZDelete icon will be appear highlighted.

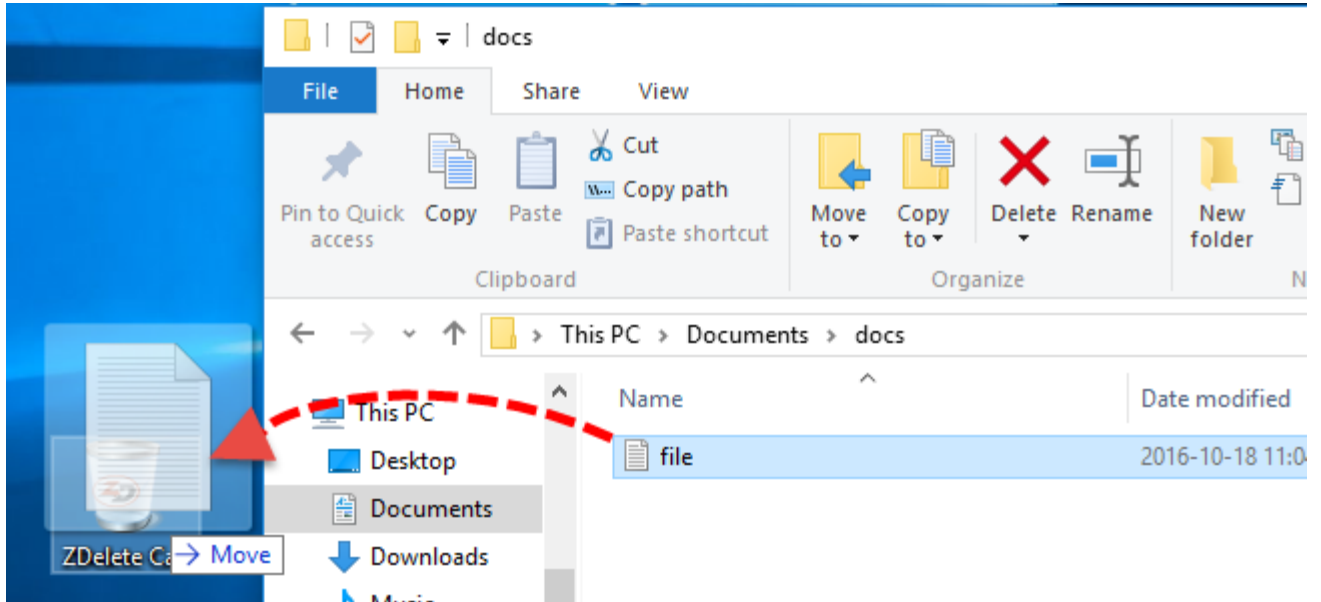


Figure 6: Erasing a file

3. Confirm the erasure process

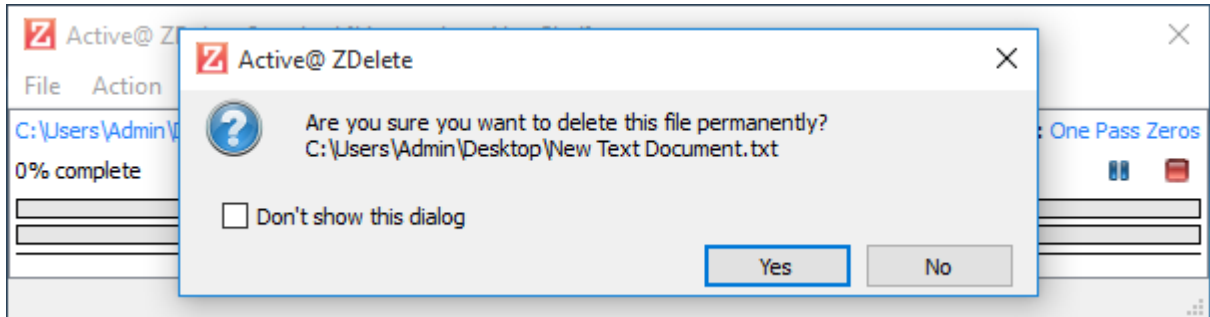


Figure 7: Confirming erasure

- Note:** You may disable this dialogue from appearing every time an erasure is instigated. Simply check the box reading "Don't show this dialog"

4. Progress will be displayed in the ZDelete window. Once completed, a report dialogue will notify you of the completed erasure

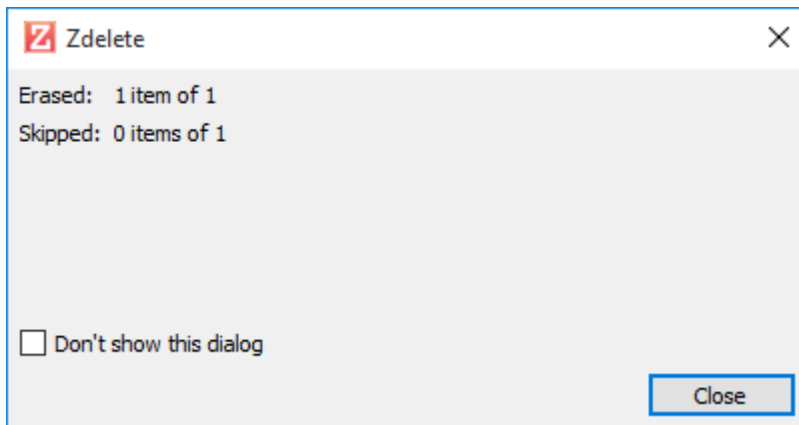


Figure 8: Erasure completed



Note: As with the confirmation dialog, this notification may be disabled by checking the box reading "Don't show this dialog"

Context Menu Deletion

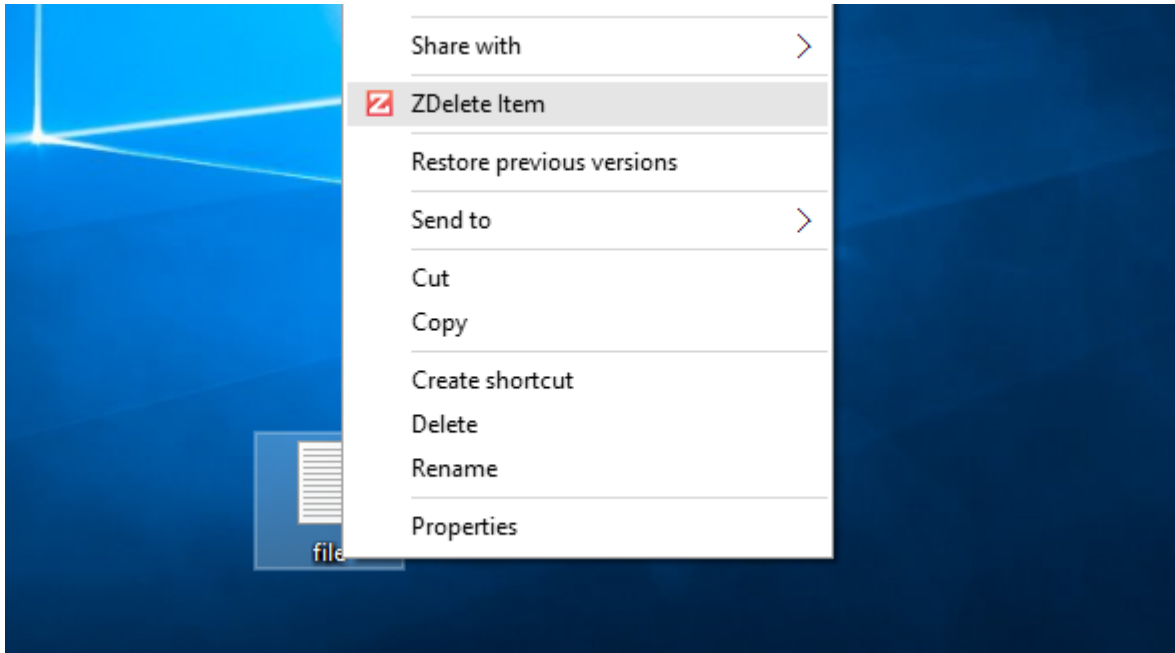


Figure 9: Context menu erasure

1. Right-click the file or folder for secure deletion
2. Select **ZDelete Item** from the context menu
3. Progress will be displayed in the ZDelete window. Once completed, a report dialogue will notify you of the completed erasure

ZDelete Application

The ZDelete application allows you to launch any of ZDelete's actions from a graphical user interface. It is also where you can register ZDelete to your name/company, update to a newer version, view logs and adjust your settings.

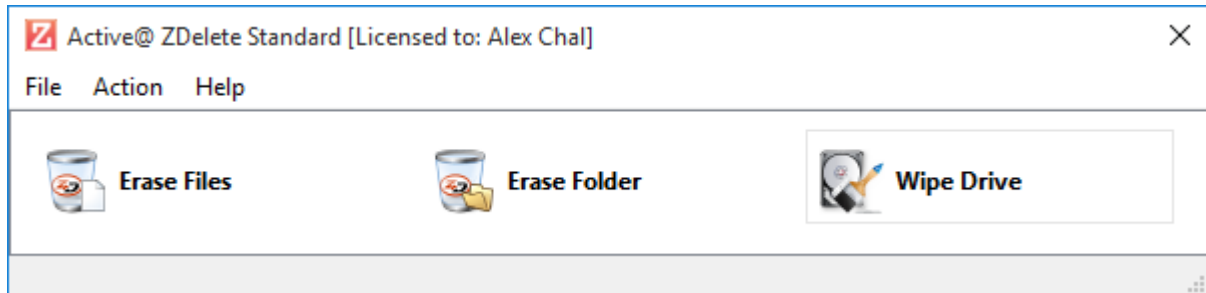


Figure 10: ZDelete application window

Registration & Licensing

To access ZDelete's advanced features, the application must be registered. This is done by purchasing the full license online at zdelete.com

After obtaining a license an email will be sent to the email address provided. This email will contain the Registration Key used to activate your ZDelete license.

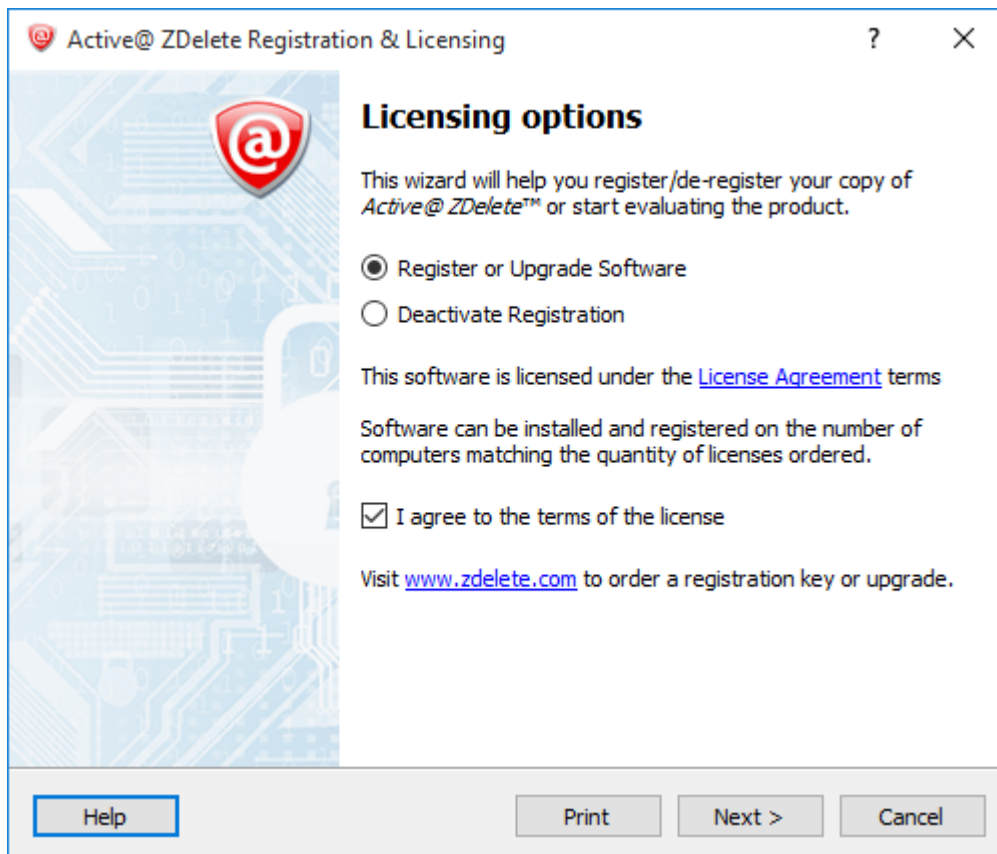



Figure 11: Registration window

Follow the registration wizard steps to register the ZDelete application on your computer.

 **Note:** A ZDelete license may be activated on up to 3 machines at once. After that, if another machine requires an activation, you will need to **Deactivate Registration** on one of the activated machines.

Configuring ZDelete Settings

ZDelete supports [22 international disk sanitation standards](#) and a variety of other customizations to fit a wide range of requirements. These customizations can be set in the ZDelete Application's **Action>Settings**.

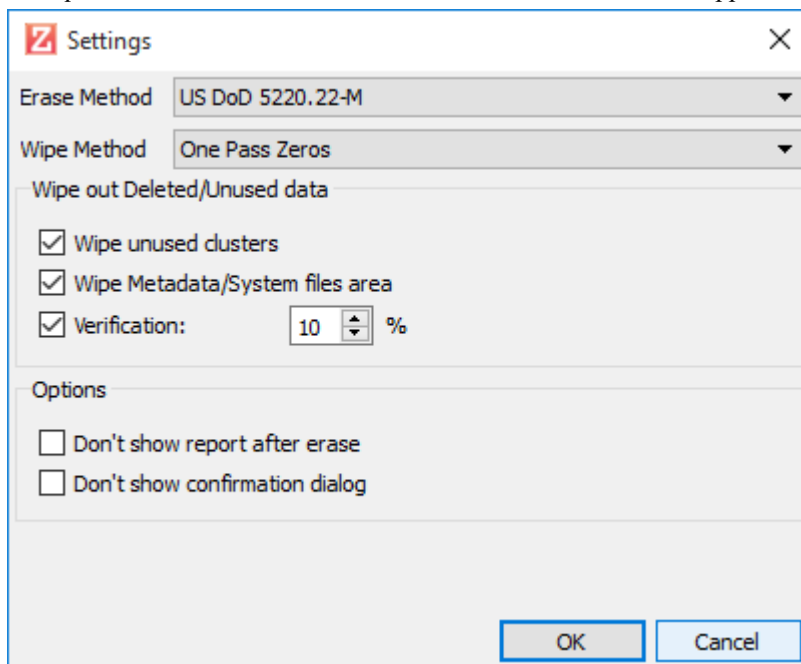


Figure 12: ZDelete Settings window

Erase Method

Set which standard to use for the ZDelete erasure process.

Wipe Method

Set which standard to use for the Wipe process.

Wipe unused clusters

Check to enable this feature.

Wipe Metadata/System files area

Check to enable this feature.

Show window options

Toggle the windows that appear before and after ZDelete erasure.

Updating the application

ZDelete's update features allow for instant access to the software's latest updates, with the option to roll back to older versions if needed. To access ZDelete Updates, launch the ZDelete Application and navigate to **Help>Updates...** If there is an available update, this window will notify you and help you install the latest version. If you've upgraded from an older version, you may also roll back to the older version using the **Rollback current version...** feature by ticking the checkbox.

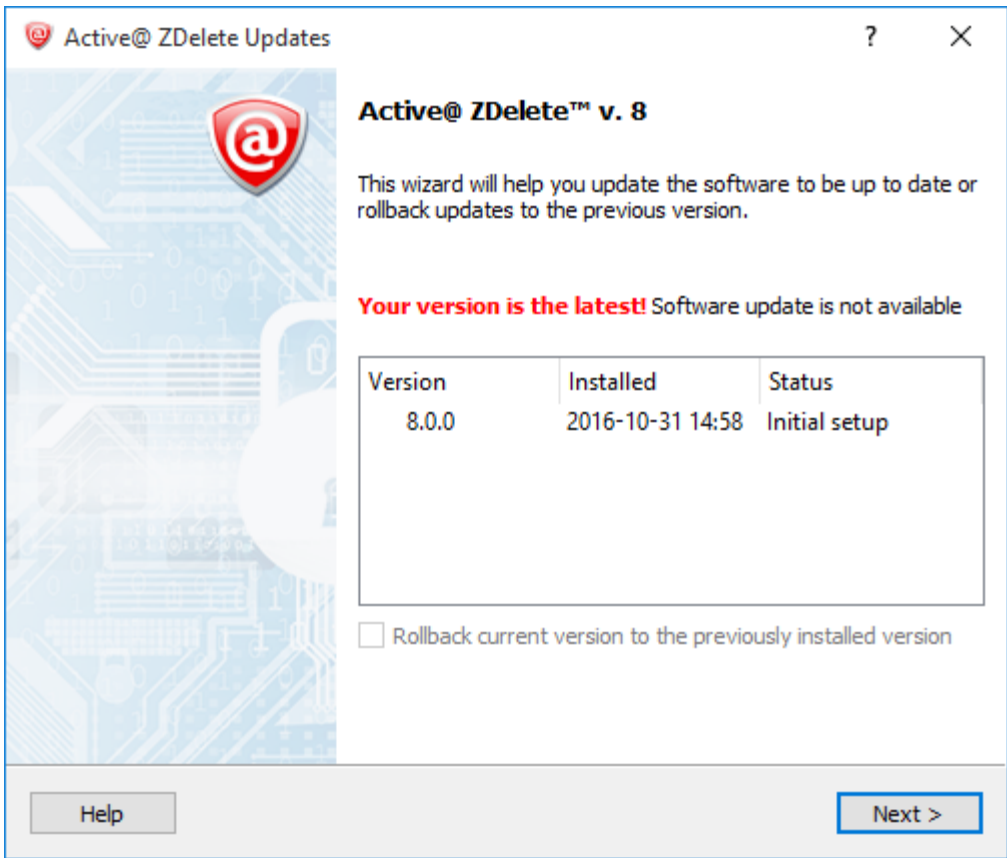


Figure 13: Updating ZDelete

Appendix

Erase methods

One Pass Zeros or One Pass Random

When using One Pass Zeros or One Pass Random, the number of passes is fixed and cannot be changed. When the write head passes through a sector, it writes only zeros or a series of random characters.

US DoD 5220.22-M

The write head passes over each sector three times. The first time with zeros (0x00), second time with 0xFF and the third time with random characters. There is one final pass to verify random characters by reading.

Canadian CSEC ITSG-06

The write head passes over each sector, writing a Random character. On the next pass, writes the compliment of previously written character. Final pass is Random, preceded by a verify.

Canadian OPS-II

The write head passes over each sector seven times (0x00, 0xFF, 0x00, 0xFF, 0x00, 0xFF, Random). There is one final pass to verify random characters by reading.

British HMG IS5 Baseline

Baseline method overwrites disk's surface with just zeros (0x00). There is one final pass to verify random characters by reading.

British HMG IS5 Enhanced

Enhanced method - the write head passes over each sector three times. The first time with zeros (0x00), second time with 0xFF and the third time with random characters. There is one final pass to verify random characters by reading.

Russian GOST p50739-95

The write head passes over each sector two times. (0x00, Random). There is one final pass to verify random characters by reading.

US Army AR380-19

The write head passes over each sector three times. The first time with 0xFF, second time with zeros (0x00) and the third time with random characters. There is one final pass to verify random characters by reading.

US Air Force 5020

The write head passes over each sector three times. The first time with random characters, second time with zeros (0x00) and the third time with 0xFF. There is one final pass to verify random characters by reading.

Navso P-5329-26 RL

RL method - the write head passes over each sector three times (0x01, 0x27FFFFFF, Random).

There is one final pass to verify random characters by reading.

NCSC-TG-025

The write head passes over each sector three times (0x00, 0xFF, Random). There is one final pass to verify random characters by reading.

NSA 130-2

The write head passes over each sector two times (Random, Random). There is one final pass to verify random characters by reading.

NIST 800-88

Supported three NIST 800-88 media sanitization standards:

1. The write head passes over each sector one time (0x00).
2. The write head passes over each sector one time (Random).
3. The write head passes over each sector three times (0x00, 0xFF, Random).

For details about this, the most secure data clearing standard, you can read the original article at the link below: http://csrc.nist.gov/publications/nistpubs/800-88/NISTSP800-88_with-errata.pdf

German VSITR

The write head passes over each sector seven times.

Bruce Schneier

The write head passes over each sector seven times (0xFF, 0x00, Random, Random, Random, Random, Random). There is one final pass to verify random characters by reading.

Peter Gutmann

The write head passes over each sector 35 times. For details about this, the most secure data clearing standard, you can read the original article at the link below:

http://www.cs.auckland.ac.nz/~%7Epgut001/pubs/se%0Acure_del.html